

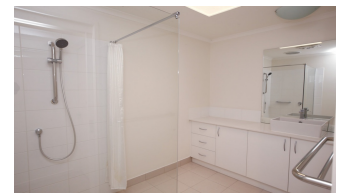
For Sale



Walmsley

191 Greeves Drive, KILSYTH VIC 3137
1300 160 170

\$440,000*



Step into Retirement at Walmsley

Beautifully presented throughout, this welcoming ground level unit offers a light-filled floor plan, overlooking gardens. This unit features large living and dining area. Featuring a 24-hour emergency assistance and a lock-up garage plus an internal laundry, this unit provides a care-free retirement lifestyle. Set amongst 12 hectares of gardens and close to the beautiful Dandenong Ranges, the warm and inviting Walmsley Retirement Community is the perfect place for a rewarding retirement. With the amenities you need to enjoy an active and peaceful lifestyle, you will feel right at home at Walmsley. - 2 Bedrooms - 1 Bathroom - 1 Garage Phone Michelle Caird on 1300 281 186 and arrange your tour today!

*Price is correct at time of publication and is subject to change.

© Australian Unity Retirement Living Services Ltd. ACN 085 317 595 Level 14, 114 Albert Road, South Melbourne, Victoria 3205.

